

## PERFORMANCE

### Processor

Intel® Core™ i7-10610U (4C / 8T, 1.8 / 4.9GHz, 8MB)

### Graphics

Integrated Intel UHD Graphics

### Chipset

Intel SoC Platform

### Memory

16GB Soldered DDR4-2666

### Memory Slots

Memory soldered to systemboard, no slots, dual-channel

### Max Memory

16GB soldered memory, not upgradable

### Storage

512GB SSD M.2 2280 PCIe 3.0x4 NVMe Opal

### Storage Support

One drive, up to 512GB M.2 2242 SSD or 2TB M.2 2280 SSD, optional Intel Optane™ Memory integrated with SSD, M.2

### Card Reader

MicroSD Card Reader

### Optical

None

### Audio Chip

High Definition (HD) Audio, Realtek® ALC3287 codec

### Speakers

Stereo speakers, 1W x2, Dolby® Audio™

### Camera

720p with ThinkShutter

### Microphone

2x, Array

### Battery

Integrated 48Wh

### Max Battery Life

MobileMark® 2014: 15.9 hr  
MobileMark 2018: 10.45 hr  
JEITA 2.0: 16 hr

### Power Adapter

65W USB-C (2-pin)

## DESIGN

### Display

13.3" FHD (1920x1080) IPS 300nits Anti-glare, Touch

### Touchscreen

10-point Multi-touch

### Keyboard

Backlit, English

### Case Color

Black

### Case Material

PPS (Top), Magnesium-aluminium (Keyboard Cover), Magnesium-aluminium (Bottom)

### Dimensions (WxDxH)

	Dimensions	Models
FHD non-touch models with PPS case models	FHD non-touch models with PPS case models	312.0 x 217.2 x 16.9 mm (12.28 x 8.55 x 0.67 inches)
FHD non-touch models with carbon fiber case models	FHD non-touch models with carbon fiber case models	311.9 x 217.0 x 16.5 mm (12.28 x 8.54 x 0.65 inches)

## SOFTWARE

### Operating System

Windows® 10 Pro 64, English

### Bundled Software

None

## CONNECTIVITY

### Ethernet

100/1000M (Adapter Needed)

### WLAN + Bluetooth®

Intel AX201 11ax, 2x2 + BT5.2

### WWAN

None

### SIM Card

None

### NFC

None

### Standard Ports

- 1x USB 3.2 Gen 1
- 1x USB 3.2 Gen 1 (Always On)
- 1x USB-C 3.2 Gen 1 (support data transfer, Power Delivery and DisplayPort™ 1.2)
- 1x USB-C 3.2 Gen 2 / Thunderbolt™ 3 (support data transfer, Power Delivery and DisplayPort 1.2)
- 1x HDMI® 1.4b
- 1x Ethernet extension connector
- 1x Headphone / microphone combo jack (3.5mm)
- 1x Side docking connector

### Optional Ports (configured)

## SECURITY & PRIVACY

### Smart Card Reader

None

### Security Chip

Discrete TPM 2.0

### Fingerprint Reader

Touch Style, Match-on-Chip

### Physical Locks

Kensington® Security Slot

### Other Security

ThinkShutter camera cover

## MANAGEABILITY

### System Management

Intel® vPro, DASH

## SERVICE

### Base Warranty

3-year, Depot

### Included Upgrade

None

## ACCESSORIES

### Bundled Accessories

None

## CERTIFICATIONS

### Green Certifications

- EPEAT™ Gold
- ENERGY STAR® 8.0
- TCO
- RoHS compliant

### Mil-Spec Test

MIL-STD-810G military test passed

## MODEL

<b>TopSeller</b>	: Yes	<b>Announce Date</b>	: 2020-05-22
<b>EAN / UPC / JAN</b>	: 194778775342	<b>End of Support</b>	: 2026-12-05

1x microSD card slot (WLAN model)

[Monitor Cable](#)

None

- Battery life is an estimated maximum. Actual battery life may vary based on many factors, including screen brightness, active applications, features, power management settings, battery age and conditioning, and other customer preferences
- California Electronic Waste Recycling Fee In California, per state law, Lenovo charges an electronic waste recycling fee on this covered device at the time of sale of the product. For more information, go to: <https://www.calrecycle.ca.gov/Electronics/Consumer>

## Premier Support - A direct 24x7x365 line to our most elite technicians.



Advanced technical support, 24x7x365, in more than 100 markets



Technical Account Managers for proactive relationship and escalation management



Comprehensive hardware & OEM software support



Priority on service delivery and repair parts



Single point of contact for simplified end-to-end case management



Lenovo Service Connect Portal for customized reporting and product support

## Accidental Damage Protection - Protection of your PC from the unexpected.

Experience shows that a significant portion of devices may be damaged (and not covered under warranty) in the first three years. Lenovo's Accidental Damage Protection service covers accidents beyond the system warranty such as drops, spills, bumps and even electrical surges. Make sure your new device has maximum protection, avoid unplanned costs and get peace of mind.

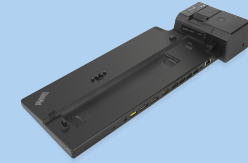
## Base Warranty - Included with the systems you purchase, default 1- or 3-year coverage window.

## Warranty Extensions & Upgrades - Service and protection that's right for your circumstances.

- Pick Up & Return Courier
- Onsite Support
- Technician Installed Customer
- Replaceable Unit Service
- International Warranty Upgrade

Lenovo may not offer the products, services or features discussed in this document in all regions. Lenovo may withdraw an offering at any time. Information is subject to change without notice. Consult your local representative for information on offerings available in your area. Lenovo reserves the right to change specifications or other product information without notice. Lenovo is not responsible for photographic or typographical errors. Lenovo provides this publication "as is" without warranty of any kind, either express or implied, including the implied warranties of merchantability or fitness for a particular purpose.

## Recommended Accessories



### ThinkPad Ultra Docking Station (American Standard Plug)

40AJ0135US

The ThinkPad Ultra Docking Station provides the best docking experience for large enterprise ThinkPad customers. The innovative side connector, designed exclusively for ThinkPad notebooks, provides a driver-free way t...

## Recommended Services

BEST	4Y Lenovo Protect (Premier Support + Accidental Damage Protection + Keep Your Drive + 3Y Sealed Battery) (5PS0N73238)
BETTER	3Y Lenovo Protect (Premier Support + Keep Your Drive + Accidental Damage Protection + Sealed Battery) (5PS0N73216)
GOOD	3Y Lenovo Support (Premier Support + Keep Your Drive + Sealed Battery) (5PS0N73159)

For a full list of accessories and services, please visit: <https://smartfind.Lenovo.com>



**PSREF**  
Product Specifications  
Reference